

KYUSHU T日本URISM MAP



MODEL COURSE
1. VOLCANOES & ONSEN
2. CULTURE & HISTORY

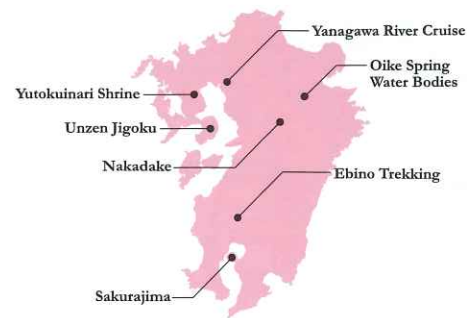


The Island of Volcanoes and Onsen

A round trip of Kyushu by train & bus.

Many active volcanoes can be found in the Kyushu region, such as Mt. Fugen, Mt. Aso and Mt. Sakurajima. These volcanoes provide the power which generates the region's many famous onsen hot springs, and form beautiful natural landscapes unique to Kyushu. Many of these areas have also been designated as geoparks.

Map &
Model course
Reference



Sakurajima (Kagoshima): map D-9
Sakurajima is an active volcano in Kinko Bay—a familiar symbol of Kagoshima. You can reach the mountain by ferry or car.



Unzen Jigoku (Hells) (Nagasaki): map C-6
Jigoku means "Hell" in Japanese and refers to the hot gasses and boiling hot spring water that erupts from the area. The strong smell of Sulphur is also associated with these hot springs.

Ebino Trekking (Miyazaki): map D-8
Enjoy hiking in the mountains or deep gorges and experience the natural beauty, unique geological features and unique plant life of the area.



Yanagawa River Cruise (Fukuoka): map C-5
Ride a small boat slowly through crisscrossing canals and enjoy a unique view of a castle town.



Yutokuinari Shrine (Saga): map C-5
Established in 1687, and recognized as one of the three largest Inari shrines in Japan, its main buildings are entirely lacquer coated and gorgeously designed in vivid colors. The gods enshrined here are worshiped as guardians for good harvests, prosperity in business and family fortunes.



Oike Spring Water Bodies (Oita): map E-5
Up to 20,000 tons of fresh water a day springs up in Oike. Oike is located on the northern side of Kurodake in the Mt. Kuju area. Many tourists visit this place to bring back the water which is listed as one of Japan's hundred most famous watering holes.



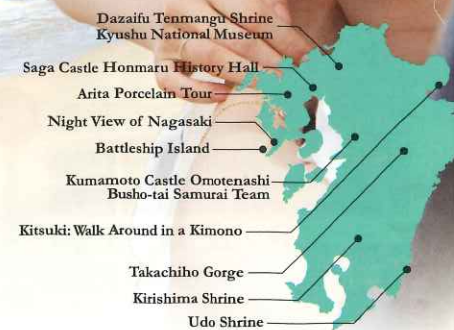
Nakadake (Kumamoto): map E-5
One of the five mountains that make up Mount Aso. It has seven craters of which one is still active.



Use a rental car to explore the Culture & History of Kyushu.

Renting a car and travelling through Kyushu on the road is a great way to experience the region. Kyushu's network of highways connect many of Kyushu's top destinations that can be hard to reach via public transport. You could find yourself among nature journeying through a vast valley, or along a beautiful coastline not viewable by any other form of transport. Renting a car in Kyushu is cheap and easy, and with Kyushu's highways and roads uncrowded and easy to navigate, it is a great option for individual travelers, small groups and families.

Map & Model course Reference



Udo Shrine
(Miyazaki): map F-9

The main hall is in a rocky cave facing the cliff of Hyuga-nada. Why don't you try to throw a "lucky ball (Un Dama)" towards the cavity of "Kameishi" under the cliff to fulfill your wish.

Kyushu National Museum
(Fukuoka): map D-2(D-4)

The Kyushu National Museum was established as the fourth national museum in Japan with the concept of "capturing the formation of Japanese culture through the perspective of Asian history."



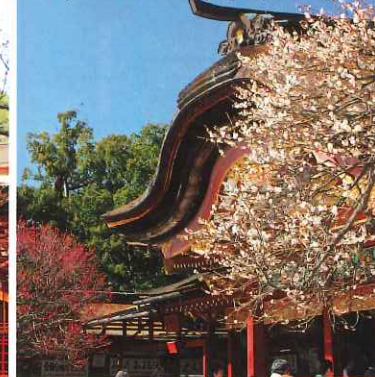
Dazaifu Tenmangu Shrine (Fukuoka): map D-2(D-4)

Dedicated to the god of scholarship, many high school students visit this shrine in spring to pray for success in their entrance exams. The main shrine building is a nationally designated important cultural property.



Arita Porcelain Tour
(Saga): map B-5

Go around visiting locations where Arita ware porcelain is made, with its 400-year history. The area is known as the birthplace of porcelain in Japan.



Kirishima Shrine
(Kagoshima): map D-8

A very old shrine founded in the 6th century. The magnificent vermilion-lacquered main shrine hall was constructed in 1715.



Night View of Nagasaki (Nagasaki): map B-6

One of the three great urban night views in the world, alongside Hong Kong and Monaco. The lights of the port are spectacular.



Kitsuki: Walk Around in a Kimono (Oita): map F-4

If you stroll around this castle town wearing a kimono (rentals available), you receive various privileges such as free admission into facilities.



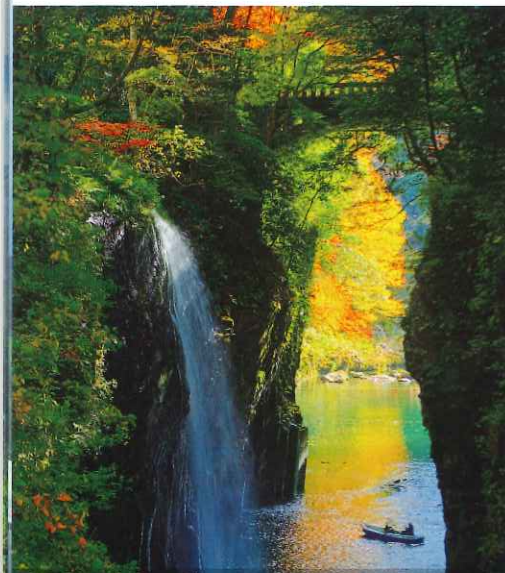
Saga Castle Honmaru History Hall (Saga): map C-4

The History Hall was built on the Saga Castle Honmaru Goten (citadel inside the castle walls) ruins and contains within it a faithful reconstruction of the insides of the castle itself. This hall is one of the largest reconstructed wooden buildings, and the first restoration of a honmaru goten in the whole of Japan.



Kumamoto Castle Omotenashi Busho-tai Samurai Team (Kumamoto): map D-6(F-10)

Watch an exciting live samurai act and acrobatic dance performed at Sakura-no-baba Josaien next to Kumamoto Castle!



Takachiho Gorge (Miyazaki): map E-6

A V-shaped, steep-walled gorge with a mysterious atmosphere. Why not take a rental boat in order to better view the Manai Falls, named as one of the top 100 waterfalls in Japan?



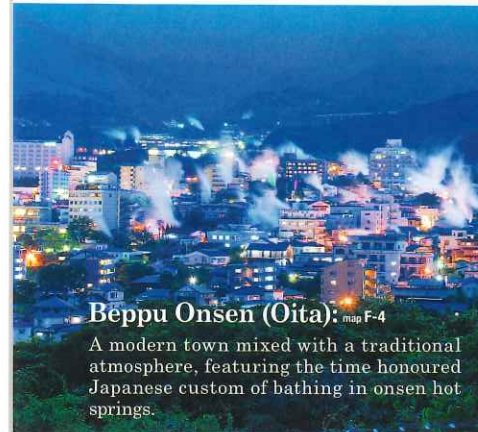
Battleship Island (Nagasaki): map B-6

This island, that you may have seen featured in the 2012 James Bond movie "Skyfall," is a popular spot for those travelling in Nagasaki. Due to its unusual shape from a distance, as created by its high rise apartments, the island is colloquially known as "battleship Island". The island was originally home to the Hashima Coal Mine and was eventually abandoned in the 1970's making for its ghostly atmosphere in the present day. Tours are available to the island, but landing is dependent on the roughness of the surrounding sea.

The Best Onsen

Enjoy Kyushu's hot springs while wearing yukata!

You can visit a variety of onsen hot springs in Kyushu. Every hot spring has its own unique quality and surrounding scenery. Which onsen will become your favourite?



Beppu Onsen (Oita): map F-4

A modern town mixed with a traditional atmosphere, featuring the time honoured Japanese custom of bathing in onsen hot springs.



Kurokawa Onsen (Kumamoto): map E-5

This hot spring town has been refined in its appearance and atmosphere and was additionally classified as a two-star hot spring area in the "2009 edition Michelin Green Guide Japan."



Uchinomaki Onsen (Kumamoto): map E-5

An elegant hot spring resort, the largest in the Aso area, with over 30 hotels and traditional inns lined up together. This town has a long history of being loved and frequented by artists and literary folk alike.



Ureshino Onsen (Saga): map B-5

A once flourishing post-station town in the Edo Period. Water from the hot spring has long been known for its skin-smoothing properties.



Shiratori Onsen (Miyazaki): map D-8

A public onsen hot spring located on the Ebino Kogen mountainside. Surrounded by a lush forest, listen to echoing birdsong as you soak in the open air baths.



Sakurasakura Onsen / Doroyu (Mud bath) (Kagoshima): map D-8

This onsen hot spring is enveloped by the untouched nature of Kirishima. Why not try the mud bath, famous for its effects on making the skin glisten?

Yufuin Onsen (Oita): map E-4

This is one of the most popular hot springs in Japan. There are many cafes, artists' studios and museums, making for an enjoyable stroll around the town.



Obama Onsen (Nagasaki): map C-6

Obama Onsen features gushing hot spring water from 30 different sources, and also has the warmest hot springs in Japan. You can also watch the beautiful setting sun sink into the ocean while indulging in Japan's longest footbath of 105 meters, which incidentally has a temperature of 105 degrees as well. The footbath is named "Hot Foot 105" in Japanese.



Ibusuki Natural Sand Bath (Kagoshima): map D-10

Get buried in hot sand on the beach—a unique form of hot spring with a great detoxifying effect.



Gourmet Foods

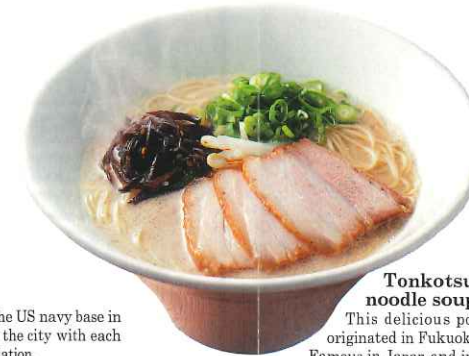
Enjoy Kyushu's Local, unique delicacies!

Kyushu is well-known for its delicious food and unique regional dishes. Thanks to the warm climate, Kyushu has an abundance of agricultural produce, seafood and good quality livestock.

Chicken Nanban (Miyazaki):
Chicken nanban is a popular dish nationwide, but has its origins in Miyazaki. It is made with crunchy and crispy deep-fried young Miyazaki chicken, dipped in an exquisite sweet and sour sauce, and dressed with tartar sauce.



Sasebo Burger (Nagasaki):
The recipe for this burger originated from the US navy base in Sasebo. Burger shops are located all over the city with each restaurant offering a slightly different variation.



Tonkotsu Ramen (Pork broth noodle soup) (Fukuoka):
This delicious pork broth and noodle soup originated in Fukuoka, Kyushu's bustling capital. Famous in Japan and internationally, why not come down to Fukuoka and give it a try yourself?



Boiled Tofu at Ureshino Hot Spring Resort (Saga):
This hot spring boiled tofu is a specialty of the Ureshino resort. This combination of nutritious tofu and hot spring water is very good for the health. The spring water can also be drunk and is great for digestion.



Dago Soup (Kumamoto):
Kumamoto is an area in which you can taste one of Kyushu's traditional cuisines, Dago Soup. This soup is made by kneading dough into a flat dumpling, and then boiling it alongside seasonal vegetables such as radishes and carrots, before miso and soy sauce is added for extra flavor. However, the style and variation of the soup changes from restaurant to restaurant and house to house. One thing is for certain; this soup is great for warming up in the Kumamoto winter.



Yusenpei (Nagasaki):
Baked rice crackers made using hot spring water. The rice crackers have a slightly sweet, refreshing and light texture, and it is also popular as a souvenir.



Steamed Eel (Fukuoka):
The rice is mixed with sweet soy sauce, then topped with grilled eel and finally steamed. You can taste the eel from every bite.



Hell-steamed Chicken (Kumamoto):
A special dish of the hot spring resort in Oguni-cho. Cooked by putting the chicken in the pot and steaming it for more than two hours in the steam from the hot springs.

Beppu Cold Noodles (Oita):
In Beppu, Korean style cold noodles are eaten often, even in winter. The thick noodles and moderately sour soup are delicious.



Kannawa Hell-steamed Studio (Oita):
This is a place where you can experience the unique "hell-steamed cooking" method of the hot springs. Seafood and vegetables steamed using this method are really tasty.



On Tamaran Bowl (Kagoshima):
This local delicacy of Ibusuki uses locally produced mountain vegetables and seafood. It is also customary to top this dish with an egg boiled in the onsen hot springs to complete the recipe.

Shirokuma (Kagoshima):
Shirokuma, meaning Polar Bear, is Kagoshima's original shaved ice dessert with fruits like banana and cherry piled on top and covered with condensed milk.



Miyazaki Beef (Miyazaki):
Miyazaki Prefecture is one of the top black beef producers in Japan. The brand name "Miyazaki Beef" is given only to selected meat that meets strict criteria, including tenderness, taste, and color. Its rich and profound taste has garnered it a high reputation both in Japan and overseas.



Seasonal Events

Enjoy events and festivals held only in Kyushu!

Kyushu is really a place for festival lovers, with a plethora of events to pique the interest, including traditional festivals and lively events for the passionate Kyushu people. There are also dozens of places to enjoy seasonal flowers, such as cherry blossoms and cosmos.



Miyama Kirishima at Unzen Mounting Nitta Pass (Nagasaki): map C-6

Nita Pass, the tourist Mecca of Unzen, is filled with the sight of 10,000 glorious pink Miyama-Kirishima, or Rhododendron kiusianum, from mid-May.



Water Slide at Ryumon Falls (Oita): map E-4

This waterfall features a natural waterslide which is often packed with people in the summer trying to escape the heat. The waterfall is double-layered and 40 meters wide with a drop of 20 meters.



Umi no Nakamichi Seaside Park, national park (Fukuoka): map C-3(B-1)

There are four seasonal flower gardens, playgrounds, small animal corner and much more on the vast site that 40 time of Yahoo Dome. You can enjoy the place with your family.



Higotai Park (Kumamoto): map E-5

This park has a collection of flowers and rare species of wild plants native to Aso, such as Higotai, or Echinops setifer, which bloom in summer. Fields of cosmos, with their riot of color, are another special feature of autumn.



Scenery of the Pottery of Okawachiyama (Saga): map B-4

In 1657, the Nabeshima clan opened a major porcelain production plant on this mountain. It was forbidden to divulge the intricacies of the manufacturing process by the order of the lords of the realm, and was therefore named the "Village of the Secret Kiln." Nowadays, about 30 of the original pottery shops are still open.



Saitobaru Burial Mound Site (Miyazaki): map F-7

Spread about on a hilly area with an altitude of 70 meters is the Saitobaru Burial Mound Site; the largest in Japan with over 300 tombs in the area. In early spring, the rape blossoms bloom first with cherry blossoms following. This is a great place to enjoy ancient history as well as the Japanese custom of cherry blossom viewing.



Kirishima Geo Park (Kagoshima, Miyazaki): map D-8

The Kirishima Mountain Range has over 20 volcanoes, including the highest peak on Mt. Karakuni, and a numbers of crater lakes, including Onami-no-ike Pond. It was designated as Japan Geo Park in 2010.



Karatsu Kunchi Festival (Saga): map B-4

This traditional festival has long history of 200 years and is registered as an Important Intangible Folk Cultural Asset. Every November from the 2nd to 4th, 14 Hikiyama (floats) are carried around the old castle town of Karatsu.



Nagasaki Lantern Festival (Nagasaki): map B-6

In this festival, held on Chinese New Year, the town is decorated with approximately 15,000 lanterns and large illuminated objects.



Kyokusui Banquet Festival (Fukuoka): map D-2(0-4)

This banquet is held every year in the spring within the grounds of the Dazaifu Tenmangu Shrine. People who dress like noblemen from a thousand years ago gracefully prance around in an age-old imperial ceremony.



Tenryo Hita Doll Festival (Oita): map E-4

Traditional hina dolls are displayed at various spots around the city, including former noted residences and museums, from mid February to March.



Tobata Gion Yamakasa Festival (Fukuoka): map D-3

Gion Yamakasa is registered as an Important Intangible Folk Cultural Asset as well as being included as a UNESCO Intangible Cultural Heritage. This traditional event is held in summer and features lanterns at night.



Yatsushiro Myokensai Festival (Kumamoto): map D-6

This festival is registered as a National Important Cultural Property and also included in UNESCO's Intangible Cultural Heritage. In this festival you can view some of Shinto's most sacred symbols such as the Mikoshi, Shinto Lion and horses as well as the legendary sea creature "Kida" and much more.



Ohara Festival (Kagoshima): map D-9

Over 20,000 dancers take part in this festival. It is held on the second and the third of November every year.



Fruit Picking *The time may vary depending on farmers.



* The data indicates monthly average temperature and average total precipitation in each prefecture in Kyushu (based on the data for January – December 2016, provided by the Japan Meteorological Agency)

KYUSHU TOURISM MAP

JR Kyushu Rail Pass

The JR Kyushu Rail Pass is an economical option for train access that is available to international tourists. You can ride the Kyushu Shinkansen and Limited Express trains as well as the Local and Rapid trains within the designated area that are operated by JR Kyushu. Seats can be reserved at a JR Kyushu train station or JR Kyushu Travel branch.



SUNQ Pass

Ride almost all local and highway buses within Kyushu and Shimonoseki in Yamaguchi Prefecture, as well as some ferries. With unlimited access to 2,400 bus routes in Kyushu, this one bus pass will take you almost anywhere in Kyushu.



Kyushu Expressway Pass

Note: Urban expressways and toll roads are not included.

The Kyushu Expressway Pass (KEP) is a convenient way for tourists using rental car facility to explore Kyushu. You can choose a pass according to the number of days you plan to stay—from 2 to 10 days—and use it to travel on major expressways as much as you desire for a single flat rate. Note: An ETC card* is required to use KEP.



* ETC (Electronic Toll Collection) is a card payment system that allows drivers to automatically pay highway tolls without stopping their vehicle at a toll booth. Some car rental companies will lend an ETC card with their vehicle.



Theme park where the character of Sanrio was used as a theme, there are popular character shows such as Hello Kitty.

01

02

03

04

05

01

02

03

04

05



This vast lot is a huge mock-up of a Dutch town, containing accommodation, art museums and amusement facilities. The overall aim is to provide the visitor with an enjoyable and relaxing residential-type resort life.



The resort, renovated in the summer of 2016, is located on the Pacific Coast surrounded by pine forests. It has become a place where you can have a very comfortable stay.



Legend

Interchange(IC)	Junction(JCT)	Service Area(SA)/Parking Area(PA)





North Kyushu

- Day 1**
 - 10:00 Fukuoka City map C-2(C-4)
 - 11:00 Yanagawa River Cruise map C-5
 - 15:00 Yutokuinari Shrine map C-5
 - 19:00 Overnight stay in Kashima City map C-5
- Day 2**
 - 8:30 Kashima City
 - 9:30 Nagasaki City map B-6
 - 15:00 Unzen Onsen map C-6
 - 18:00 Unzen Onsen Stay
- Day 3**
 - 7:15 Unzen Onsen
 - 10:00 Kumamoto Castle map D-6(F-10)
 - Suizenji Jojuen Gardens(Suizenji Park) map D-6(G-10)
 - 14:30 Aso map E-5
 - 18:00 Aso Stay
- Day 4**
 - 10:00 Aso
 - 13:00 Beppu "Jigoku Meguri" map F-4
 - 18:00 Beppu City Stay map F-4
- Day 5**
 - Fukuoka Airport map C-2(C-4)



South Kyushu

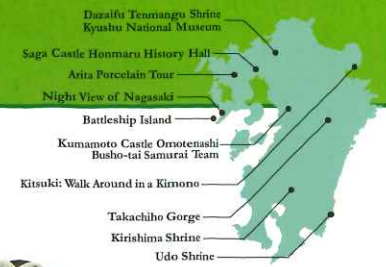
- Day 1**
 - 10:00 Kagoshima City map D-9
 - 12:00 Senganen Garden map D-9
 - 14:00 Kagoshima City Sightseeing map D-9
 - 18:00 Kirishima Onsen Stay map D-8
- Day 2**
 - 8:30 Kirishima Onsen
 - 10:30 Ebino Eco Museum Center map D-8
 - 18:00 Miyazaki City Stay map F-8
- Day 3**
 - 13:30 Miyazaki City
 - 16:40 Takachiho-cho map E-6
 - 20:00 Takachiho Yokagura
 - 21:00 Takachiho-cho Stay
- Day 4**
 - 9:00 Takachiho-cho
 - 12:00 Fukuoka City map C-2(C-4)
 - 18:00 Fukuoka City Stay
- Day 5**
 - Fukuoka Airport map C-2(C-4)



All Kyushu

- Day 1**
 - 10:00 Kagoshima City map D-9
 - 11:00 Sakurajima map D-9
 - 15:00 Senganen Garden map D-9
 - 18:00 Kagoshima City Stay
- Day 2**
 - 9:00 Kagoshima City
 - 10:00 Kirishima Shrine map D-8
 - 18:00 Miyazaki City Stay map F-8
- Day 3**
 - 8:00 Miyazaki City
 - 11:30 Takachiho Gorge, Takachiho Shrine map E-6
 - 19:00 Beppu Onsen Stay map F-4
- Day 4**
 - 8:00 Beppu "Jigoku Meguri" map F-4
 - 12:00 Aso map E-5
 - 16:00 Kumamoto City Shopping map D-6
 - 18:00 Kumamoto City Stay
- Day 5**
 - 9:00 Kumamoto Castle map D-6(F-10)
 - Suizenji Jojuen Gardens(Suizenji Park) map D-6(G-10)
 - 13:00 Shimabara Castle Town map C-6
 - 18:00 Unzen Onsen Stay map C-6
- Day 6**
 - 9:00 Unzen Onsen
 - 11:00 Nagasaki City, Peace Park map B-6
 - 13:00 Battleship Island map B-6
 - 18:00 Nagasaki City Stay
- Day 7**
 - 9:00 Nagasaki City
 - 11:00 Yutokuinari Shrine map C-5
 - 14:00 Yanagawa River Cruise map C-5
 - 18:00 Fukuoka City Stay map C-2(C-4)
- Day 8**
 - Fukuoka Airport





North Kyushu

Day 1	10:00	Fukuoka City <small>map C-2(C-4)</small>	Day 4	12:00	Peace Park <small>map B-6(A-1)</small>	Day 5	19:00	Beppu Onsen Stay <small>map F-4</small>
	10:30	Dazaifu Tenmangu Shrine <small>map D-2(D-4)</small>		13:00	Battleship Island <small>map B-6</small>		8:00	Beppu "Jigoku Meguri" <small>map F-4</small>
	12:30	Yanagawa River Cruise <small>map C-5</small>		18:00	Night view of Nagasaki <small>map B-6</small>		10:30	Kitsuki Castle Town <small>map F-4</small>
	14:00	Saga Beef Steak <small>map C-4</small>		20:00	Nagasaki City Stay <small>map B-6</small>		14:00	Mojiko Retro <small>map E-3</small>
	16:00	Arita Porcelain Tour <small>map B-5</small>		9:00	Nagasaki City		16:00	Fukuoka City Shopping <small>map C-2(C-4)</small>
Day 2	9:30	Takeo Onsen	Day 3	10:00	Unzen Onsen <small>map C-6</small>	Ferry	18:00	Fukuoka City Stay
	10:00	Ureshino Onsen <small>map B-5</small>		12:00	Shimabara Castle Town <small>map C-6</small>		18:00	Fukuoka Airport <small>map C-2(C-4)</small>
				15:00	Kumamoto Castle <small>map D-6(F-10)</small>	Rent-a-car		



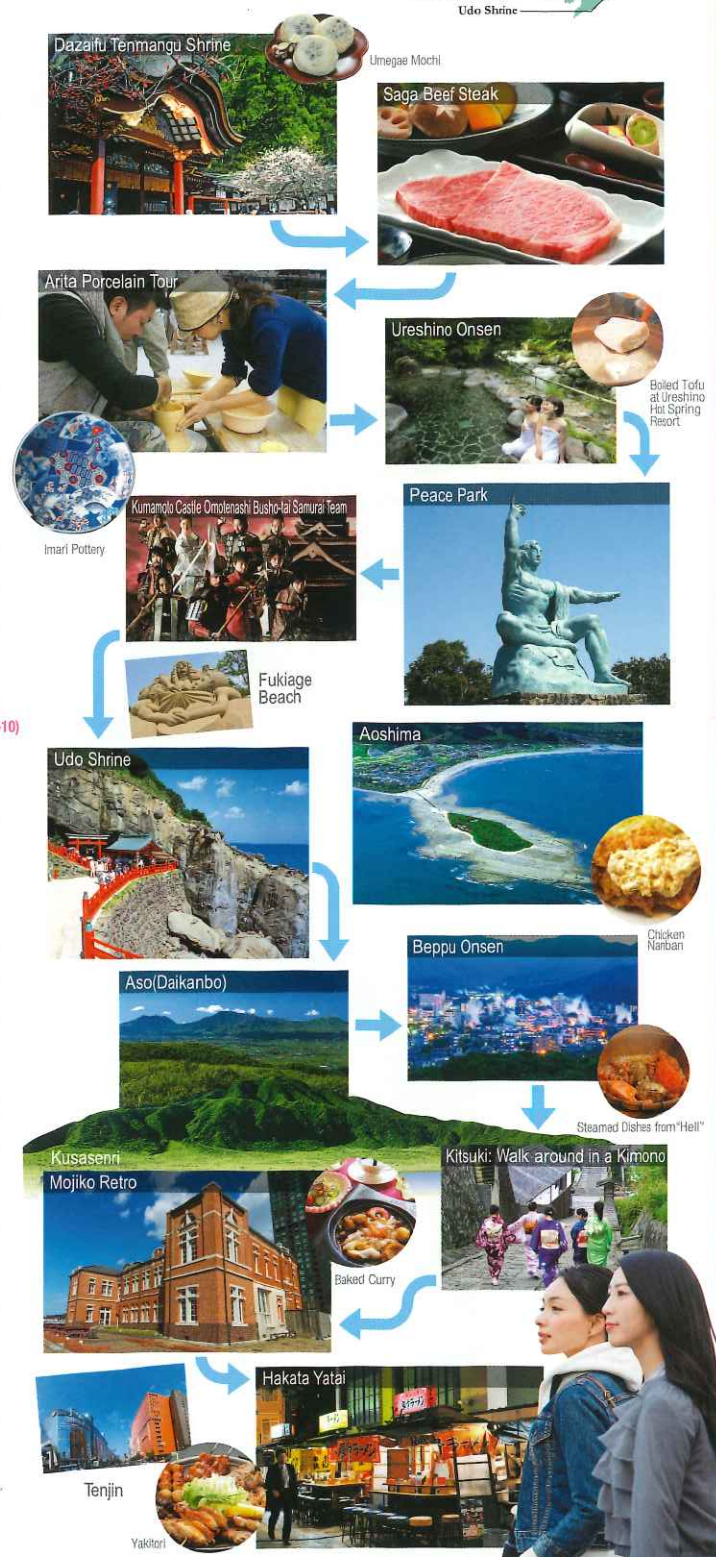
South Kyushu

Day 1	10:00	Kagoshima City <small>map D-9</small>	Day 4	9:00	Minamiaso Onsen <small>map E-6</small>	
	12:00	Kirishima Shrine <small>map D-8</small>		10:00	Museum Seiwa Bunraku <small>map E-6</small>	
	18:00	Ibusuki Onsen Stay <small>map D-10</small>		13:30	Aoi Aso Shrine <small>map D-7</small>	
Day 2	9:00	Ibusuki Onsen	Day 5	15:00	Ebino <small>map D-8</small>	
	10:00	Fukiage Beach <small>map C-9</small>		18:00	Kagoshima City Stay <small>map D-9</small>	
	13:00	Senganen Garden <small>map D-9</small>		Day 6	9:00	Miyazaki City
	16:00	Udo Shrine <small>map F-9</small>			11:00	Takachiho Gorge <small>map E-6</small>
			13:00	Takachiho Shrine <small>map E-6</small>		
				15:00	Aso <small>map E-5</small>	
				18:00	Minamiaso Onsen Stay <small>map E-6</small>	



All Kyushu

Day 1	10:00	Fukuoka City <small>map C-2(C-4)</small>	Day 3	9:00	Nagasaki City
	10:30	Dazaifu Tenmangu Shrine <small>map D-2(D-4)</small>		10:00	Unzen Onsen <small>map C-6</small>
	12:30	Yanagawa River Cruise <small>map C-5</small>		13:00	Shimabara Castle Town <small>map C-6</small>
	14:00	Saga Beef Steak <small>map C-4</small>		18:00	Kumamoto City Stay <small>map D-6</small>
Day 2	16:00	Arita Porcelain Tour <small>map B-5</small>	Day 4	8:00	Kumamoto Castle <small>map D-6(F-10)</small>
	18:00	Takeo Onsen <small>map B-6</small>		Suizenji Jojuen Gardens(Suizenji Park) <small>map D-6(G-10)</small>	
				12:00	Ebino <small>map D-8</small>
				14:00	Kirishima Shrine <small>map D-8</small>
				17:00	Ibusuki Onsen Stay <small>map D-10</small>
Day 5	9:00	Ibusuki Onsen	Day 6	9:00	Miyazaki City
	10:00	Fukiage Beach <small>map C-9</small>		11:00	Takachiho Gorge <small>map E-6</small>
	13:00	Senganen Garden <small>map D-9</small>		16:00	Aso <small>map E-5</small>
	16:00	Udo Shrine <small>map F-9</small>		18:00	Beppu Onsen Stay <small>map F-4</small>
Day 7	8:00	Beppu "Jigoku Meguri" <small>map F-4</small>	Day 8	8:00	Beppu "Jigoku Meguri" <small>map F-4</small>
	10:30	Kitsuki Castle Town <small>map F-4</small>		10:30	Kitsuki Castle Town <small>map F-4</small>
	14:00	Mojiko Retro <small>map E-3</small>		16:00	Fukuoka City Shopping <small>map C-2(C-4)</small>
	18:00	Fukuoka City Stay		18:00	Fukuoka City Stay
				18:00	Fukuoka Airport <small>map C-2(C-4)</small>



Access

International Flights to (from) Kyushu

Southeast Asia	Korea
Singapore → Fukuoka	Seoul → Fukuoka
Bangkok → Fukuoka	→ Kitakyushu
Hanoi → Fukuoka	→ Saga
Ho Chi Minh → Fukuoka	→ Kumamoto
Manila → Fukuoka	→ Nagasaki
China	→ Oita
Beijing → Fukuoka	→ Miyazaki
Shanghai → Fukuoka	→ Kagoshima
→ Saga	Busan → Fukuoka
→ Nagasaki	→ Kitakyushu
→ Kagoshima	Daegu → Fukuoka
Dalian → Fukuoka	Taiwan
→ Kitakyushu	Taipei → Fukuoka
Qingdao → Fukuoka	→ Miyazaki
Guangzhou → Fukuoka	→ Kagoshima
Wuhan → Fukuoka	Kaohsiung → Fukuoka
Nanjing → Fukuoka	→ Kumamoto
Chengdu → Fukuoka	United States
Hong Kong → Fukuoka	Guam → Fukuoka
→ Kumamoto	Honolulu → Fukuoka
→ Miyazaki	Finland
→ Kagoshima	Helsinki → Fukuoka
Macao → Fukuoka	

*1 The information above is as of October 2016.



Tokyo, Osaka, Nagoya → Kyushu

Airline

Origin	Destination	Flight Time	
Tokyo (Haneda)	Fukuoka	1h 55 min	
	Kitakyushu	1h 45 min	
	Saga	1h 55 min	
	Nagasaki	1h 55 min	
	Kumamoto	1h 50 min	
	Oita	1h 40 min	
	Miyazaki	1h 45 min	
	Kagoshima	1h 55 min	
	Tokyo (Narita)	Fukuoka	2h 05 min
		Saga	2h 15 min
Kumamoto		2h	
Oita		1h 50 min	
Kagoshima		2h 10 min	
Osaka (Itami)		Fukuoka	1h 10 min
	Nagasaki	1h 20 min	
	Kumamoto	1h 10 min	
	Oita	1h	
	Miyazaki	1h 05 min	
	Kagoshima	1h 15 min	
	Osaka (KIX)	Fukuoka	1h 15 min
		Nagasaki	1h 20 min
		Kumamoto	1h 25 min
		Oita	1h 05 min
Kagoshima		1h 15 min	
Nagoya (Chubu)	Fukuoka	1h 25 min	
	Nagasaki	1h 30 min	
	Kumamoto	1h 25 min	
	Oita	1h 15 min	
	Miyazaki	1h 20 min	
	Kagoshima	1h 30 min	
Nagoya (Komaki)	Fukuoka	1h 30 min	
	Kumamoto	1h 30 min	

Shinkansen

Tokyo Sta.	4h 55 min	Hakata Sta.
Nagoya Sta.	3h 20 min	
Shin-Osaka Sta.	2h 25 min	
Shin-Osaka Sta.	3h	Kumamoto Sta.
Shin-Osaka Sta.	3h 45 min	Kagoshima-chuo Sta.



Inquiries Kyushu Tourism Promotion Organization

7f Denki Bldg. Kyosokan, 2-1-82 Watanabe-dori,
Chuo-ku, Fukuoka 810-0004 Japan
Tel: +81-92-751-2947 Fax: +81-92-751-2944
E-mail: qtp@welcomekyushu.jp
URL: <http://www.welcomekyushu.com>

